

Building a Culture of Awareness & Preparedness in Texas



Fire Aside

April 2026

Introductions:



Special Speaker:
Dustin Dunn
Certified Wildfire Mitigation Specialist
at Lake Travis Fire Rescue



Moderated by:
Jason Key
Regional Director at Fire
Aside



Overview

1. Wake Up Call
2. Building Resiliency
3. Challenges
4. Demonstrate the Culture
5. Lessons Learned
6. My Secret Weapon

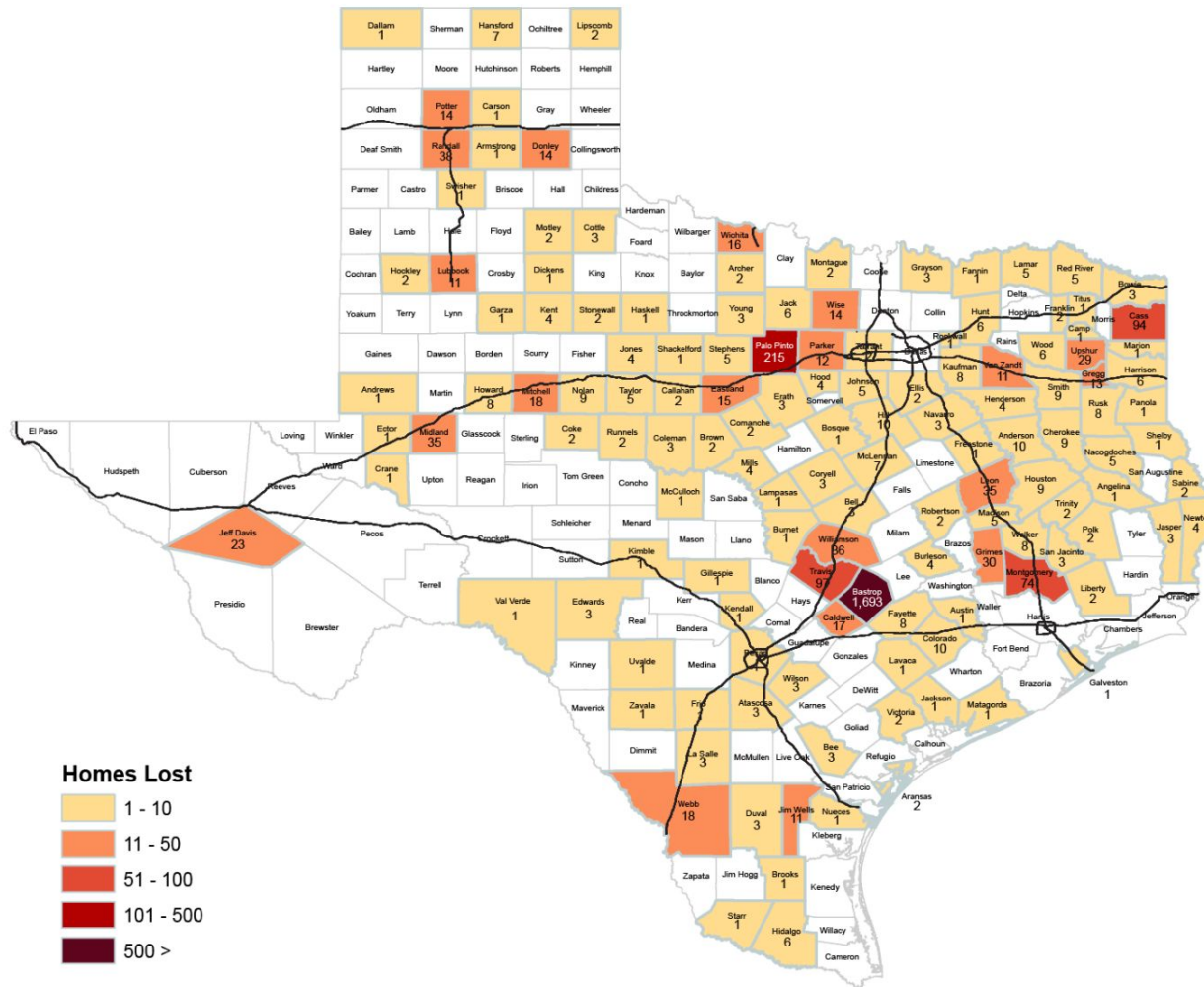


We've got a Wicked Problem

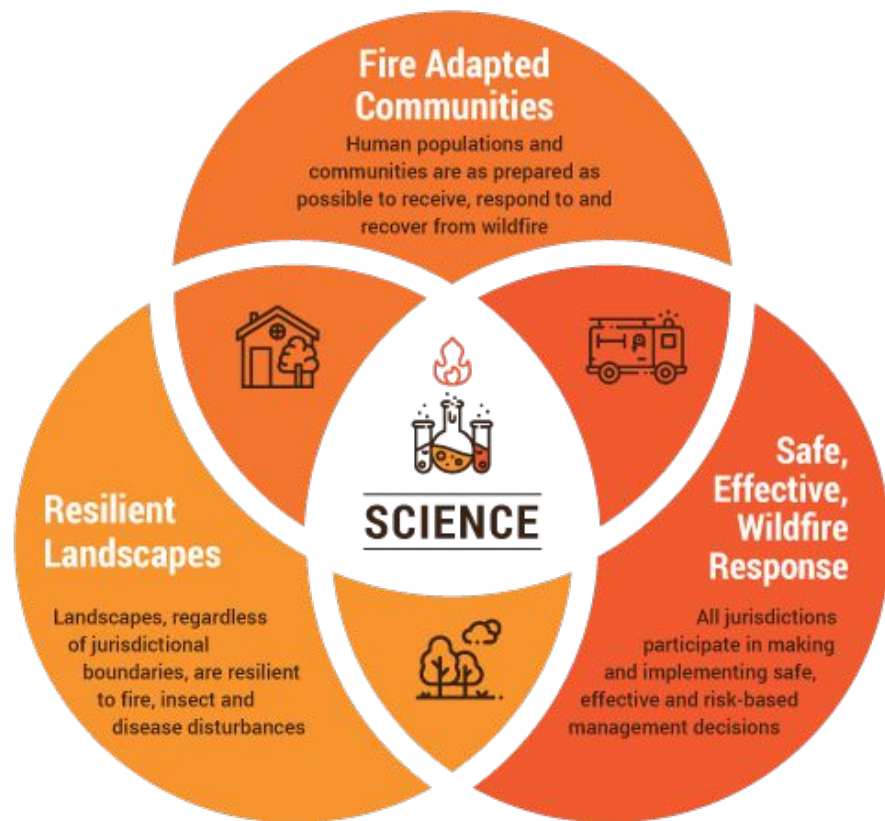


Wake Up Call

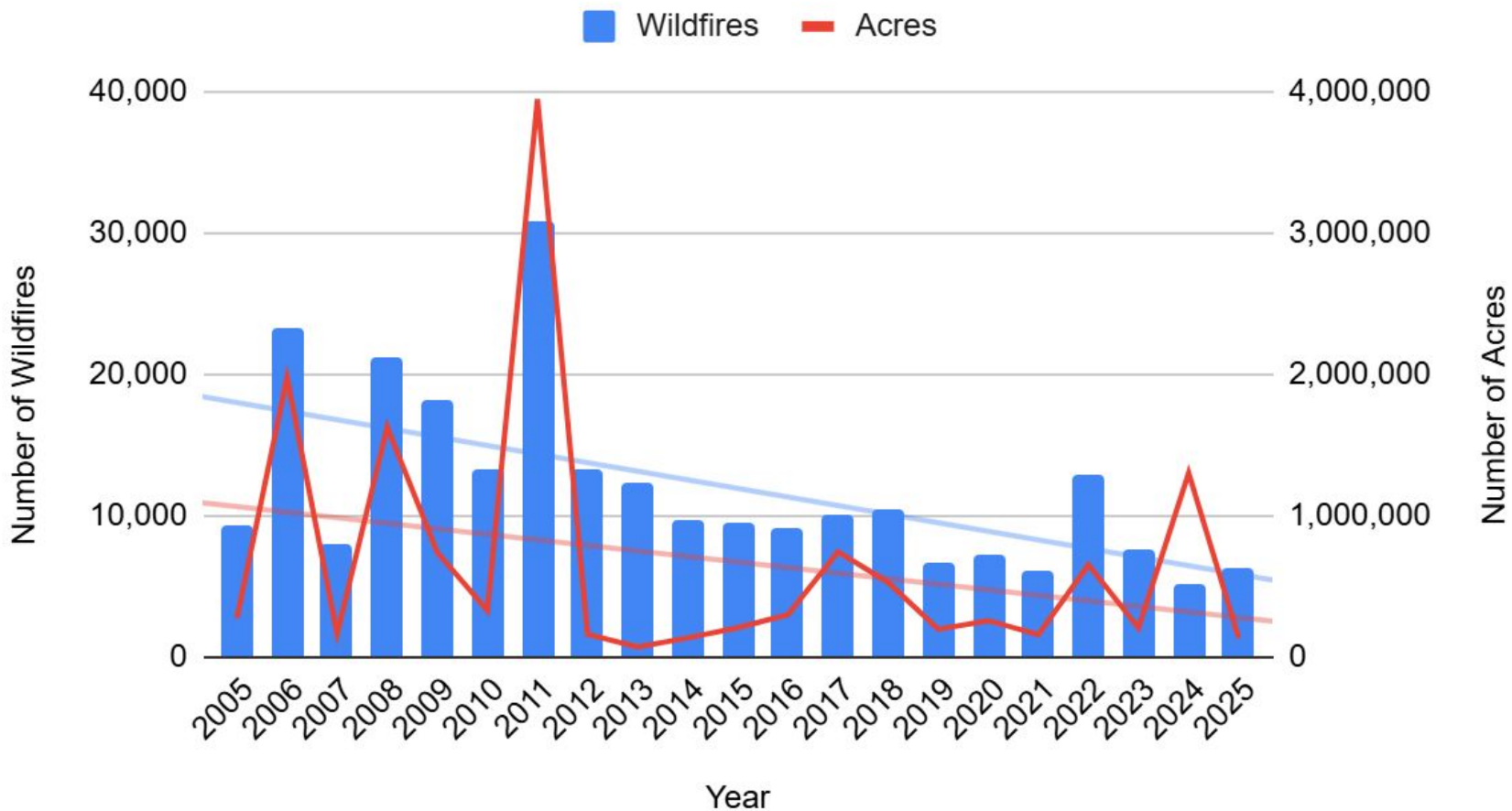




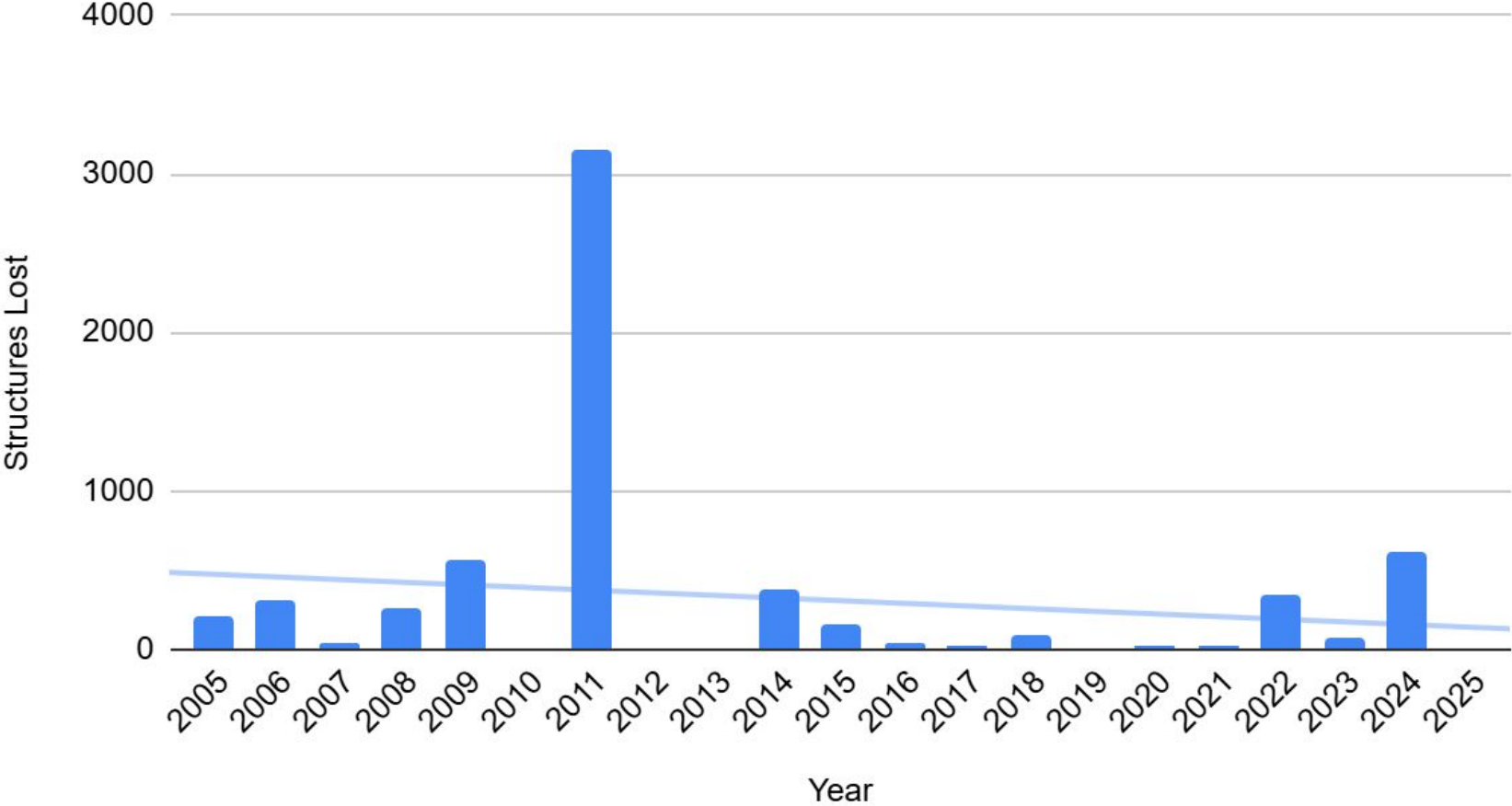
Building Resiliency



Texas Wildfires



Structures Lost



Challenges

Austin Ranks In The Top Five Cities In The U.S. For Potential Wildfire Damage

Austin metro ranks among highest wildfire risk in U.S., analysis shows

Hundreds of Austin-area communities face wildfire danger, new risk map shows

Thousands of Austin homes face wildfire danger with only one way out

RISK

HAZARD



LIKELIHOOD

the probability of
wildfire starting
and spreading



INTENSITY

the energy released
by a wildfire

X

VULNERABILITY



EXPOSURE

the spatial overlap
of wildfire and
communities



SUSCEPTIBILITY

whether a
community may be
harmed by wildfire

PRECONTEMPLATION

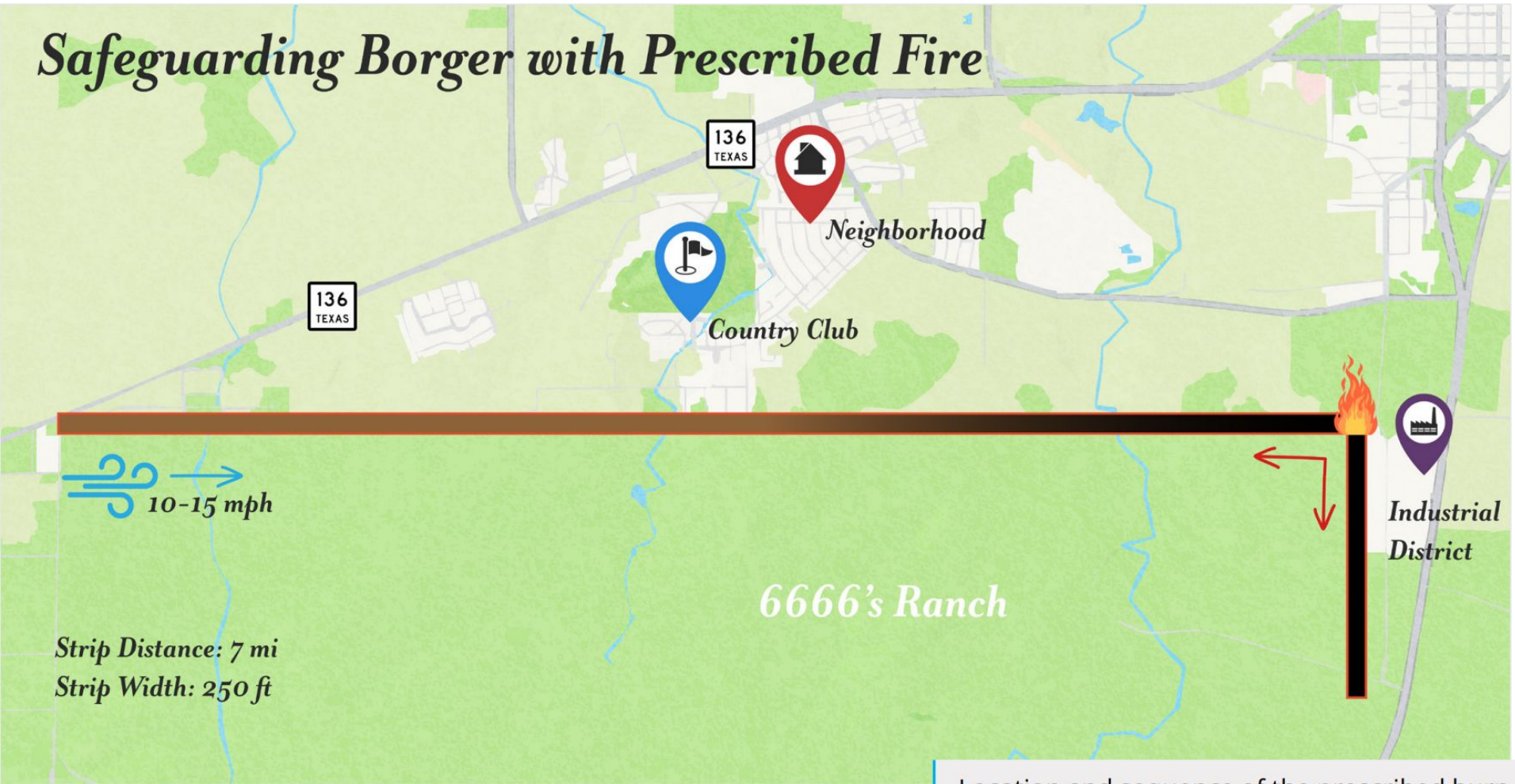


Lead, Follow, or...

- Educate everyone
- Remove obstacles reduce friction
- Tailor to individual needs
- Safety in numbers
- Fire knows no boundary



Safeguarding Borger with Prescribed Fire



Strip Distance: 7 mi
Strip Width: 250 ft

Location and sequence of the prescribed burn

Lessons Learned

- Follow the data
- Realistic expectations
- Long term relationships
- Make it personal



My Secret Weapon

Lake Travis Fire Rescue Defensible Space Report Login

Wildfire Resilience

- Property Summary
- Defensible Space**
- Home Hardening
- Resilient Items
- Correction Checklist
- Awareness & Preparedness

Download / Print Login

Defensible Space Improvements

Defensible space is the area around a home (or structure) that has been modified to reduce the spread and intensity of fire. In this area, vegetation is maintained or removed to reduce fire behavior. The first 5 feet of area immediately adjacent to your home should contain no flammable material at all.

View as map All Issues All Zones

1. Remove All Vegetation in Zone 1 (0-5 feet)
2. Remove Ladder Fuels

Lake Travis Fire Rescue Defensible Space Report Login

Wildfire Resilience

- Property Summary
- Defensible Space**
- Home Hardening
- Resilient Items
- Correction Checklist
- Awareness & Preparedness

Download / Print Login

4 Potential Defensible Space Improvements were observed

Defensible space is the area around a home (or structure) that has been modified to reduce the spread and intensity of fire. In this area, vegetation is maintained, removed, or reduced to alter fire behavior. The first 5 feet of area immediately adjacent to your home should contain no flammable material at all.

[Review Issues](#)

4 Potential Home Hardening Improvements were observed

The practice of reducing structure ignitability, commonly called home hardening, can improve the likelihood of a home surviving a wildfire.

There are three ways your home can be exposed to wildfire:

1. Embers (or firebrands)
2. Surface fire leading to direct flame contact
3. Radiant heat from burning vegetation or adjacent homes.

Embers are responsible for igniting 88-95% of homes during a wildfire.

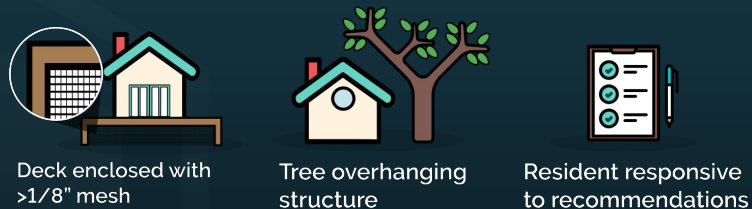
[Review Details](#)

Powered by Wildfire Risk

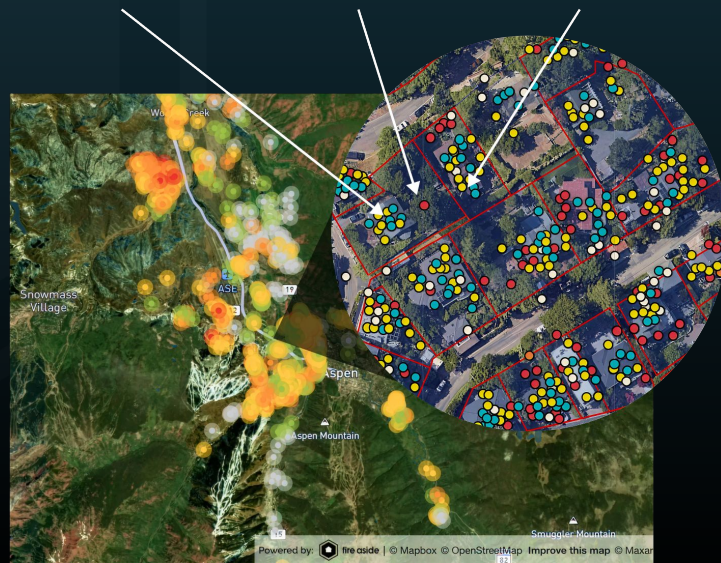


Fire Aside at a Glance:

Technology to help communities adapt to wildfire

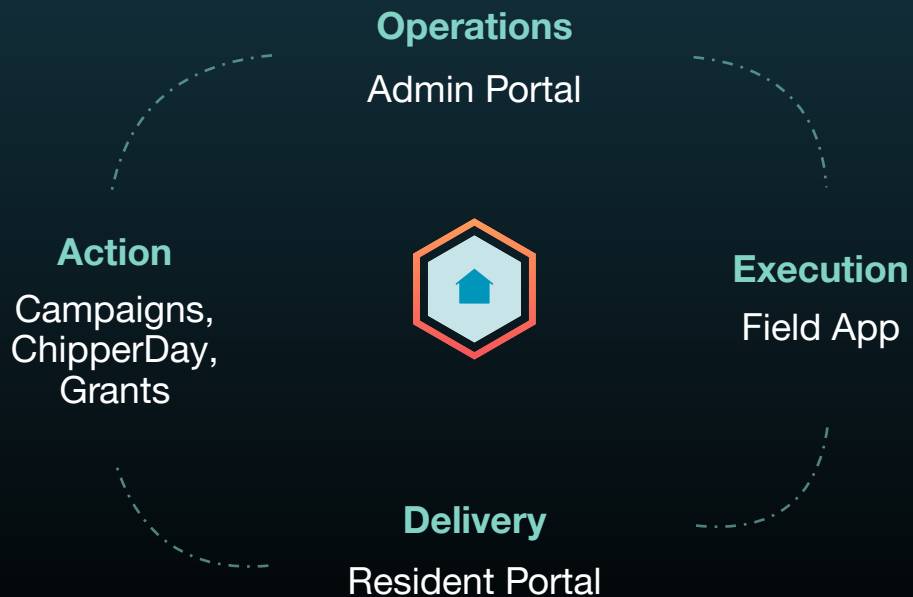


Proudly supporting Fire Departments and Fire Safe Councils in 14 states



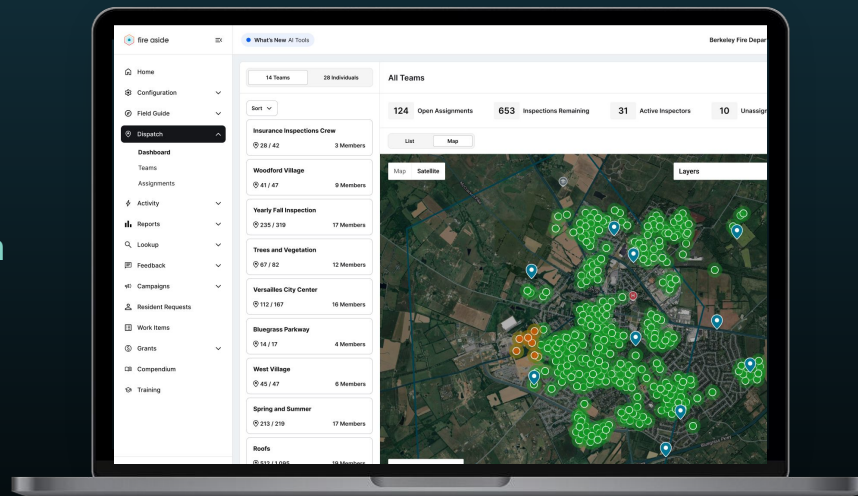
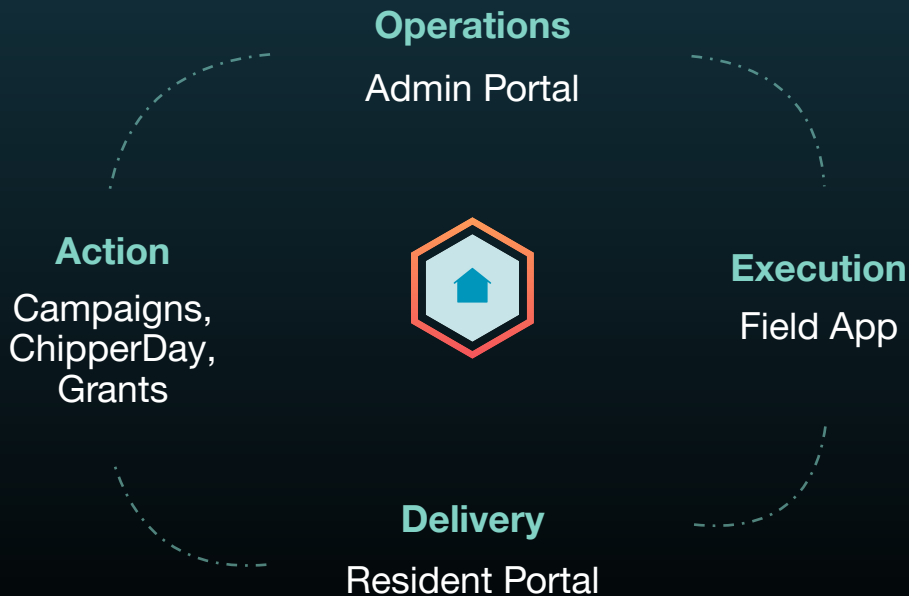
Fire Aside at a Glance:

Technology to help communities adapt to wildfire



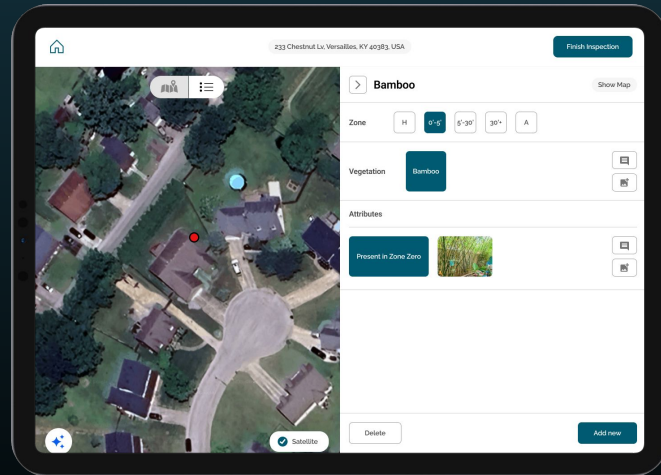
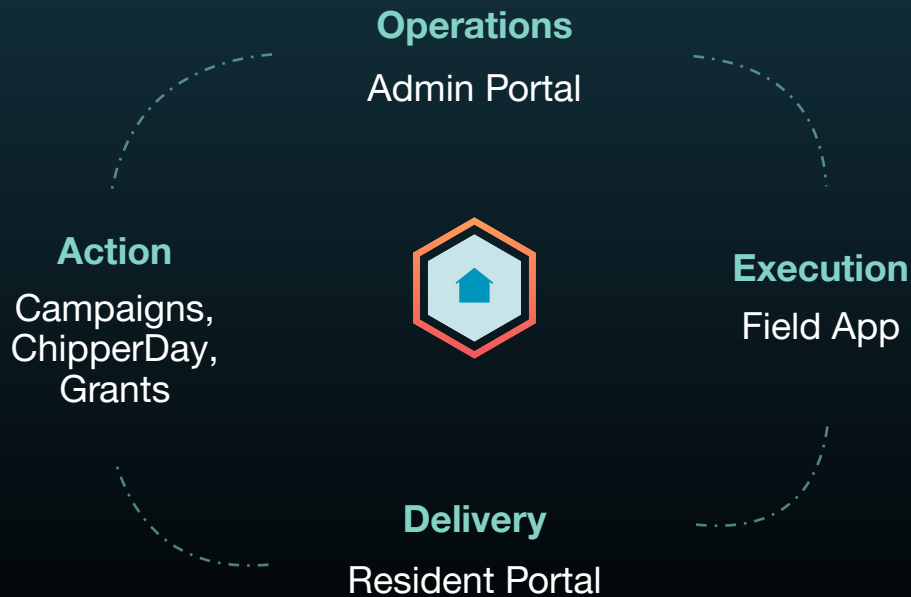
Fire Aside at a Glance:

Technology to help communities adapt to wildfire



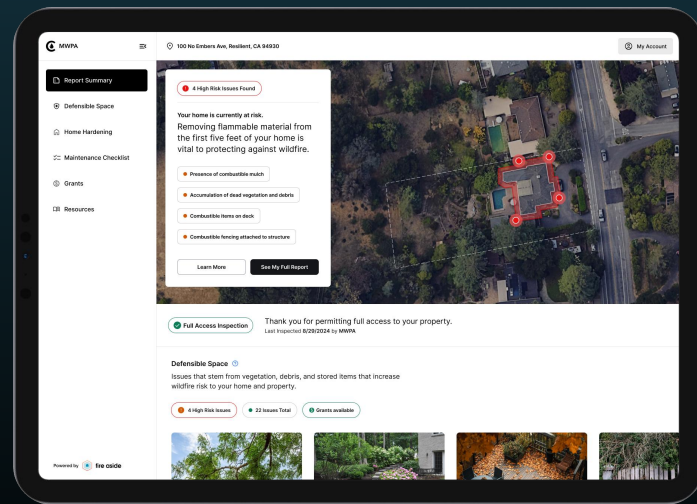
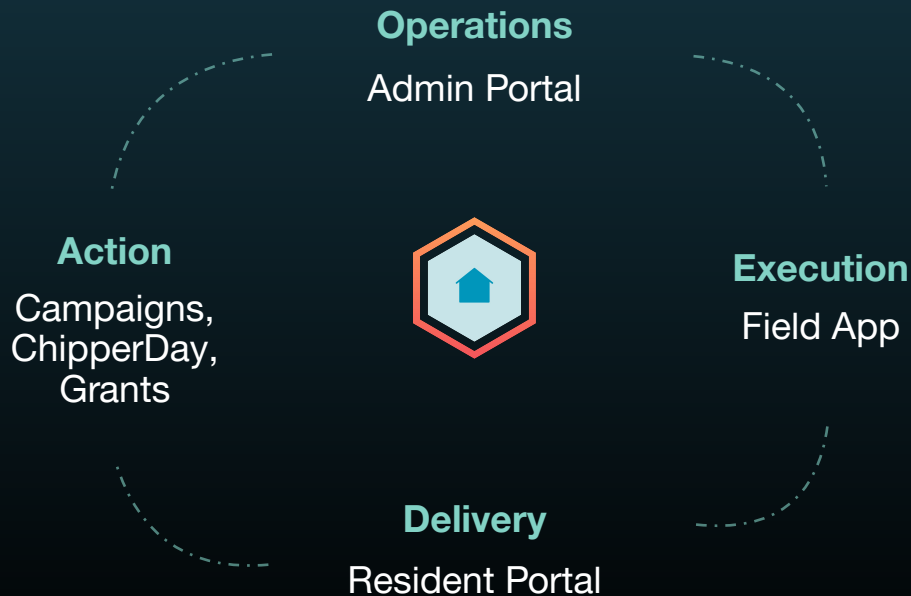
Fire Aside at a Glance:

Technology to help communities adapt to wildfire



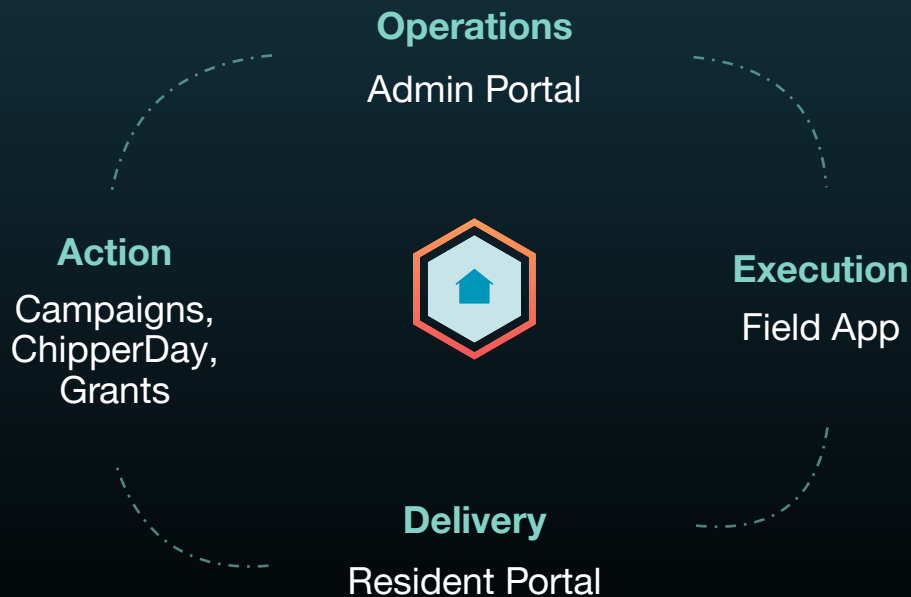
Fire Aside at a Glance:

Technology to help communities adapt to wildfire



Fire Aside at a Glance:

Technology to help communities adapt to wildfire



Questions?



Fire Aside

AUSTIN ENERGY SERVICE AREA

50% City of Austin • 50% Outside City of Austin

